

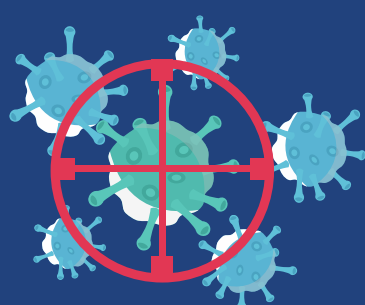
Returning to work and understanding the risks

Legionnaires Disease

As the restrictions begin to ease on the Coronavirus lockdown, businesses are faced with new health risks arising from the 'restarting' process.

Health risks to workers and the public

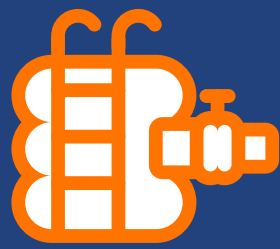
Legionnaires' disease is a risk because of building closures or reduced occupancy during the COVID-19 outbreak. Failing to reduce the risk of Legionnaires' disease from water systems can lead to large fines.



Legionella is a type of bacterium found naturally in freshwater environments, like lakes and streams. It can become a health concern when it grows and spreads in human-made building water systems.

Affected organisations

- Food production manufactures
- Schools, colleges and universities
- Hotels and restaurants
- Gyms, leisure centers and theme parks
- Rail, bus, tube, trams
- Ports for air and boats



Protection for workplace health

Legionella Risk Assessment & Testing

IOM can provide legionella assessments identifying and assessing sources of risk. Preparing a scheme to prevent or control risk. A review of the water systems, awareness training for workers and finally managing and monitoring the precautionary measures.

www.iom-world.org

Identify. Solve. Deliver.